

Flammable gas detector

CEX 300

■ ■ ■ *Increased integrity casing*

■ ■ ■ *Flame proof sensor*

■ ■ ■ *Quick response time*



Let's secure your safety together

Designed for the industrial and tertiary sector (buildings, schools, boiler rooms etc), the flammable gas detector CEX 300 has an increased integrity casing and a flame proof sensor.

The CEX 300 is connected to an OLDHAM gas controller and can be placed in hazardous areas to protect from any risk of a gas explosion.

The CEX 300 detector is IP 66 : it is dust and water proof.



Example : hazardous area

Reliable and safe operation

The basic component of the detector is its sensor, based on the catalytic oxidation principle and with a flame proof construction, it consists of pellistors in a wheatstone bridge.

The detecting filaments, when heated and exposed to gas, unbalance the wheatstone bridge and cause a voltage variation proportional to the concentration of gas.

This signal is transmitted to the control unit.

The compensating filament prevents the effects of humidity variations or temperature variations.



Accessories

- Removable filters, interchangeable without opening the housing (which is dust-proof, condensation-proof and water-resistant)
- Anti-splash device
- Gas collector cone
- Remote gas injection system
- Bellcrank brackets
- Pitot tubes, floats, heating protective device, etc.



Circulation head



Gas collector



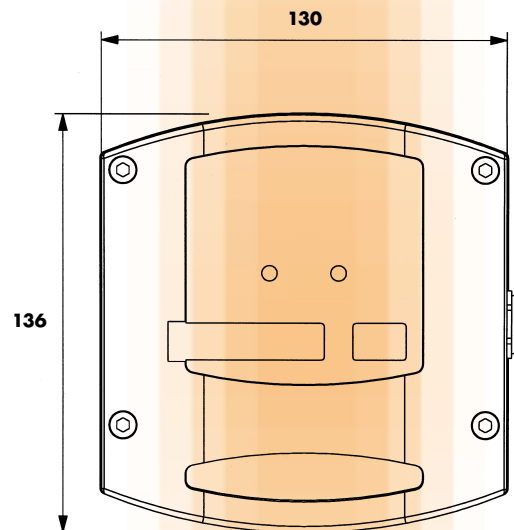
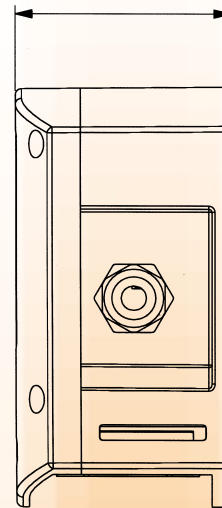
Gas input device



Mounting bracket

Technical characteristics

Manufacturer :	• OLDHAM SA
Function :	• Flammable gas detector
Range :	• 0-100% LEL of the measured gas
Casing :	• Poly carbonate
Ingress protection :	• IP 66
Sensor :	• Stainless steel
Type of sensor :	• Catalytic
Cable entry :	• 6-11 mm shielded / 8.5-16 mm armed
Wiring Connection :	• 3 active wires
Output :	• Bridge
Power consumption and loop impedance :	• Refer to the gas monitor
Approval :	• EEX ed IIC T6 ou T5 - INERIS 00.E5002X - EN 50054 and EN50057
Conformity :	• CEM
Dimensions :	• 130 W x 136 H x 69 D (in mm)
Operating temperature :	• -25°C to + 70°C
Operating humidity :	• 0-95%RH
Pressure :	• Atm +/- 10%
T(90) :	• 10s
Accuracy :	• 3%
Life span :	• > 4 years



CEX 300

Guaranteed 2 years except consumables (cells, filters)



Your agent or retailer



Plant and head office : Z.I. Est - rue Orfila
 B.P. 417 - 62 027 ARRAS Cedex FRANCE
 Tel. : 33 3 21 60 80 80 Fax : 33 3 21 60 80 00
 Web site: <http://www.oldhamgas.com>

Winter- Oldham group
German plant

☎ (49) 231 924 10
 ☎ (49) 231 924 125
 info@winter-gmbh.com

OLDHAM
Italia

☎ 011-3801371
 ☎ 011-3806613
 info@oldham.it

OLDHAM
Česká Republica

☎ 420 234 622 222/3
 ☎ 420 234 622 220
 oldham@oldham.cz

OLDHAM
Romania

☎ / ☎ (40) 21 312 37 56
 oldham@fx.ro

OLDHAM
Switzerland

☎ (41) 26 652 51 18
 ☎ (41) 26 652 51 19
 info@oldham.ch

OLDHAM
United Kingdom

☎ (44) 0 1782 562002
 ☎ (44) 0 1782 564414
 sales@oldham.biz